



*Worldwide Leader in
Steaming Equipment Since 1940*

**Esteam[®] and J-Series
OWNER'S MANUAL**

PRINTED IN THE USA

FORM #5500 - REVISION 8

From the library of: Superior Sewing Machine & Supply LLC

Congratulations and Thank You!

Thank you for purchasing your Jiffy® Steamer from the world's leading manufacturer of steaming equipment since 1940. We strive to engineer and manufacture the very best



steamer available backed by superior customer service.



With proper maintenance and cleaning, your Jiffy® Steamer will last through years of demanding use. Thank you again and we sincerely appreciate your business.

Warmest regards,
Jiffy® Steamer Company, LLC
Made in the USA Since 1940

Table of Contents

Safety Instructions	3
How to Steam.....	4
Esteam® Hand Held Steamer	5-8
Jiffy Steamer Accessories	9
Model J-1 & J-2 Jiffy® Steamers	10-15
Model J-2000 Jiffy® Steamer	16-21
Model J-4000 Jiffy® Steamer	22-27
Model J-1, J-2 & J-2000 Jiffy® Steamers	
Cleaning Instructions.....	28
Model J-4000 Jiffy® Steamer Cleaning Instructions.....	29
Jiffy® Steamer Maintenance	30
More Jiffy® Steamer Accessories.....	31
Jiffy® Steamer Steam Head Configurations	32-33
Jiffy® Steamer Cord Plug Configurations.....	33
Troubleshooting	34-35
Jiffy® Matrix Charts	36-39
Product Specifications	40
Jiffy® Steamer Warranty & Return Policy	41
Jiffy® Steamer Contact Information.....	42

Important Jiffy® Steamer Safety Instructions

When using your Jiffy® Steamer, basic precautions should always be followed, including the following:

1. **WARNING!** Read all instructions prior to usage.
2. To reduce the risk of contact with hot water emitting from steam vents, check appliance before each use by holding it away from body and operating.
3. Use appliance only for its intended use. Steam only in an up and down vertical motion. Never use steamer in a horizontal position or tilt into a backward position, this may result in water discharge.
4. To avoid the risk of electric shock, do not immerse the appliance in water or other liquids.
5. Never tug cord to disconnect from outlet; instead grasp plug and pull to disconnect.
6. Do not allow cord to touch hot surfaces. Let appliance cool completely before storing.
7. Always disconnect appliance from electrical outlet when filling with water, emptying, and when not in use.
8. Do not operate appliance with a damaged cord, or if the appliance has been dropped or damaged. To reduce the risk of electric shock, do not disassemble or attempt to repair the appliance, take it to a qualified service person or return to the Jiffy® Steamer factory for examination and repair. Incorrect reassembly or repair could cause a risk of fire, electric shock or injury to persons when the appliance is used.
9. Close supervision is necessary for any appliance being used near children. Do not leave appliance unattended while connected to power source.
10. Burns could occur from touching hot parts, hot water or steam. Use care when you empty a steam appliance as there may be hot water in the reservoir.
11. Indoor use only.
12. Never attempt to steam clothing while on body.
13. Never use an extension cord.

SAVE THESE INSTRUCTIONS



**RISK OF
ELECTRIC
SHOCK**



**RISK OF
BURNS**



LISTED
COMMERCIAL
GARMENT STEAMER
1799M



How to Steam

As your dry cleaner knows, steam is the gentlest, safest, most efficient method to remove wrinkles. Not only is steaming five times faster than ironing, it is guaranteed not to scorch even the most delicate materials and fabrics. Our steamers will remove wrinkles from clothing, drapery, tablecloths...virtually any fabric. Use the following information to help guide you to more proficient steaming.

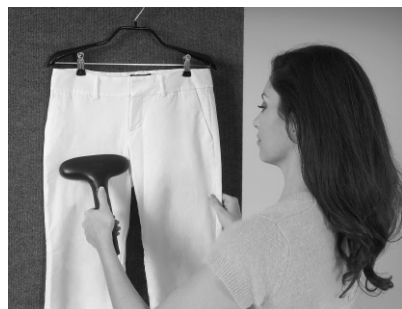
Some articles can be steamed better from the underside. This allows the steam to relax the fibers of the material, thus removing the wrinkles.



When steaming, touch material lightly with steam head and wrinkles will vanish instantly. The combination of the warm, moist steam and the steam head is important for a smooth finish.



Always steam with the hose in an upright position so any condensation is free to flow back into the steamer. If steaming in a low position near floor, frequently extend hose up and out to keep hose clear of condensation.



Pants may be easily steamed by hanging them by the cuff. You may also use your Jiffy Steamboard to serve as a vertical pressing board to steam your garments.

Jiffy® Steamers are great for removing "closet crunch," and they eliminate most trips to the drycleaner. Convenient hanger/hook mechanism holds both clothes and steam head securely.



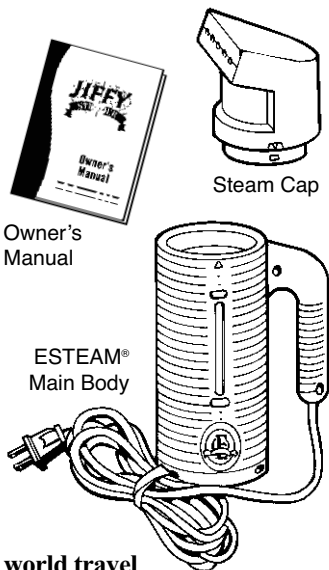
Esteam® Features and Directions

ESTEAM®

Features

- 3 times more powerful than any other hand-held steamer on the market
- Largest water reservoir available
- Wide mouth, easy-to-fill water tank
- 600-watt heating element; automatic safety shut-off temporarily cuts unit off when it runs dry
- Uses plain tap or distilled water (no additives required)
- Comfortable, easy-to-grip handle
- Special outer housing for cool-to-the-touch operation
- No internal water lines or pumps to become clogged by hard water
- 9-foot power cord for more manageable handling
- Fits neatly inside attacheé or suitcase
- Available with a multiple plug converter for world travel

Includes:



Directions for Use

1. Make sure your Esteam® is unplugged before filling.
2. Check to make sure the factory-installed red o-ring is secure inside the water tank before operating steamer (figure #1).
3. Fill with tap or distilled water to the full mark on the outside of the steamer. **Never overfill.** Never use water left overnight in steamer. Stale water causes foaming action and can create water droplets.
4. After filling, place steam cap on steamer and twist firmly until cap arrows align with arrows on the tank (figure #2). Make sure it is secure before operating unit.
5. Plug your Esteam® into proper voltage outlet. Steamer will start heating within 15 seconds, providing live steam from cold water within 2 minutes.
6. Always steam with a vertical up and down motion (figure #3). **Do not tilt unit forward or backward.**
7. Avoid allowing steamer to run dry of water.
8. Refer to page 8 for complete cleaning instructions.

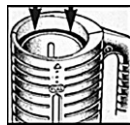


Figure 1

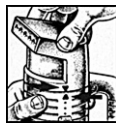
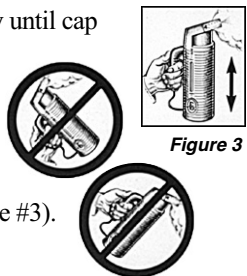
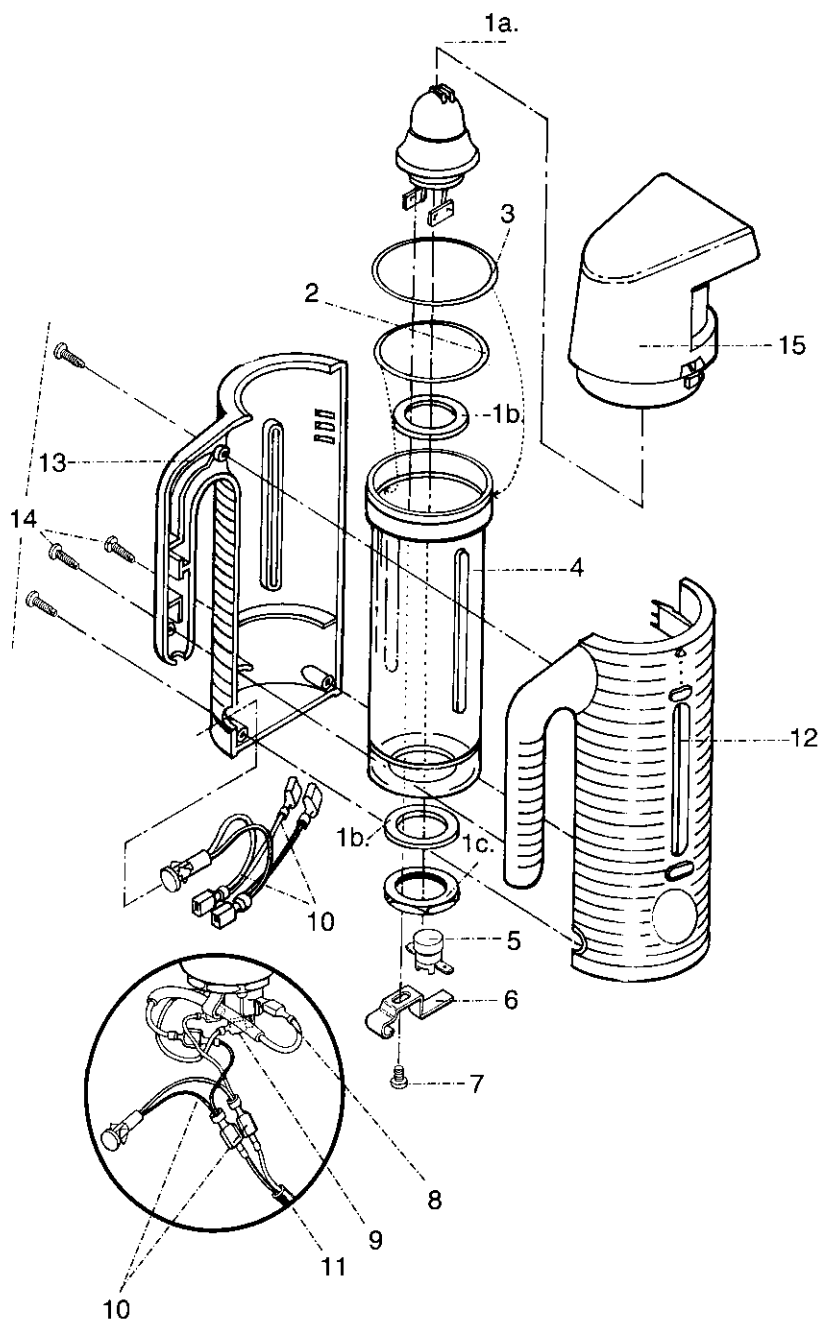


Figure 2



WARNING: Never operate without water. Unplug after each use.

Esteam® Parts Diagram



Esteam® Parts Diagram Key

Should you ever need replacement parts for your Jiffy® Steamer, you may purchase them separately. Use this handy diagram and parts list to identify any part you may need. Please include model and serial number when ordering.

ESTEAM®

Key#	Jiffy Steamer Part #	Part Description	List Price
1	0653	Esteam 120 Volt 600 Watt Heater with Gaskets and Nut	\$ 17.00
	0655	Esteam 230 Volt 625 Watt Heater with Gaskets and Nut	\$ 17.00
1a.		Esteam Heater (Sold with Item #0653 or #0655 as a Kit)	
1b.		Gasket for Esteam Heater (Sold with Item #0653 or #0655 as a Kit)	
1c.		Nut for Esteam Heater (Sold with Item #0653 or #0655 as a Kit)	
2	0661	Red Inside O-Ring	\$ 1.50
3	0662	Black Outside O-Ring	\$ 1.50
4	0669	Esteam Water Tank	\$ 24.00
5	0640	Esteam 36 T-L263 Thermostat	\$ 6.75
6	0643	Fusible Link Clamp	\$ 1.50
7	0644	Fusible Link Clamp Screw	\$ 0.50
8	0641	Fusible Link Wire with Insulated Lug (Orange)	\$ 2.50
9	0681	Red Wire with Insulated Lugs	\$ 1.50
10	0645	Pilot Light with Wiring Harness for 120 Volt Electrical Systems	\$ 7.00
	0646	Pilot Light with Wiring Harness for 230 Volt Electrical Systems	\$ 7.00
11	0647	Cord set (18/2 gauge)	\$ 7.00
12	0665	Right Case Half	\$ 14.00
13	0666	Left Case Half	\$ 14.00
14	0667	Four (4) Screws for Esteam Outer Case Halves	\$ 1.00
15	0663	Complete Steam Cap with Face Plate	\$ 20.00

ACCESSORIES

0619	Voltage Converter for Travel	\$ 19.00
0898	Liquid Cleaner - 3 Ten (10) Ounce Bottles per Package*	\$ 15.00
	*Not Available for Export.	

**ESTEAM Steam Caps with Face Plates and Case Halves are Available in Black or Pink.
Please specify color when ordering.**

If you don't see the part you need, please contact us.

Esteam® Cleaning Instructions

Once you begin to see calcium scale collect in the bottom of your ESTEAM® hand steamer, it is time to use the Jiffy® Steamer Liquid Cleaner. Please follow these instructions:

1. Pour 4 ounces of water in your ESTEAM® hand steamer.
2. Plug in the unit and bring to full steam.
3. Unplug the unit and allow to cool for 2 minutes.
4. Pour out all water.
5. Pour in 5 ounces (1/2 bottle) of the Jiffy® Steamer Liquid Cleaner.
6. **DO NOT STEAM THE UNIT WITH THE LIQUID CLEANER.**
7. Leave the liquid cleaner in the unit for 3 hours.
8. Pour out the liquid cleaner solution.
9. Scrub with a stiff bristled brush to remove excess sediment as necessary.
10. Flush the unit 3 times with fresh water.
11. Resume steaming as normal.



Jiffy® Steamer Accessories

Jiffy Travel Case

ITEM # 0890

Now you can take your Jiffy Steamer everywhere you go with our innovative Jiffy Steamer Travel Case. This case can be used with any model Jiffy Steamer and is ideal for transporting your steamer to trade shows, work sites, trunk shows, conferences and conventions. Never be without your Jiffy Steamer again! The Jiffy Steamer Travel Case is constructed with the finest materials to insure the protection of your steamer. External Dimensions: 25" x 17" x 11"



- Push-button retractable handle with comfort-grip
- Molded protective corners
- Heavy-duty, dual zippers with 1" pull tabs
- Premium twin in-line skate wheels.
- Large interior pocket for storing steam head and hose attachment
- Reinforced, interior adjustable straps to secure your Jiffy Steamer

Jiffy Steamer Professional Garment Hanger

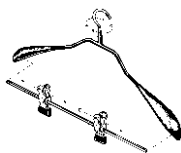
ITEM # 0897



This unique Professional Garment Hanger design works in concert with your Jiffy® Steamer to prevent unsightly hanger marks and to facilitate the steaming process. They are ideal for retail showrooms, trade shows, traveling sales people, and residences. These high quality hangers will last you a lifetime.

Jiffy® Steamer Professional Garment Hangers are loaded with features including:

- Solid metal chrome construction
- Formed shoulders to prevent hanger marks
- Non Slip, adjustable, coated clips for pants and skirts
- 360 degree swivel hook
- Removable pants bar



Jiffy Steamer

Magik Brush

ITEM # 1042

Jiffy Steamer Magik Brush quickly and effectively removes lint, fuzz, dust, dandruff and pet hair from clothing, bedding and upholstery. A comfort-grip handle and double-sided surface ensures longer brush life, twice the pick-up capacity of one-sided brushes, plus convenient left or right hand use. Keep your clothing and upholstery looking their best with this handy brush.



Jiffy Steamer

Steam Spray

Gently fragrant and natural, Jiffy® Steamer's new, scented Jiffy® Steam

Spray leaves your clothes and fabrics smelling fresh and clean. The Jiffy® Steam Spray is offered to you in three delightful fragrances, each made with high quality essential oils for a long lasting refreshing scent. The Jiffy® Ocean Breeze scent (item #1054) captures the essence of a perfect day by the sea in a bottle. Jiffy® Lavender Steam Spray (item #1052) brings the freshness of Provence into your home, or try the Jiffy® Tickled Pink Steam Spray (item #1036) for the fresh scent of springtime. 32 ounce refill bottles are available for all scents.

Jiffy Steamer Professional

Lint Roller

ITEM # 1045

Our Professional Grade Lint Roller features a reusable comfort-grip handle and Super Tac2 Professional Strength Adhesive lint strips. The Zip Strip technology enables quick and easy sheet removal with no waste. The roll is 4 inches wide and 30 feet long. 1 handle and 1 roll per order. 3 part roll refills are available. Great for home, office or travel!

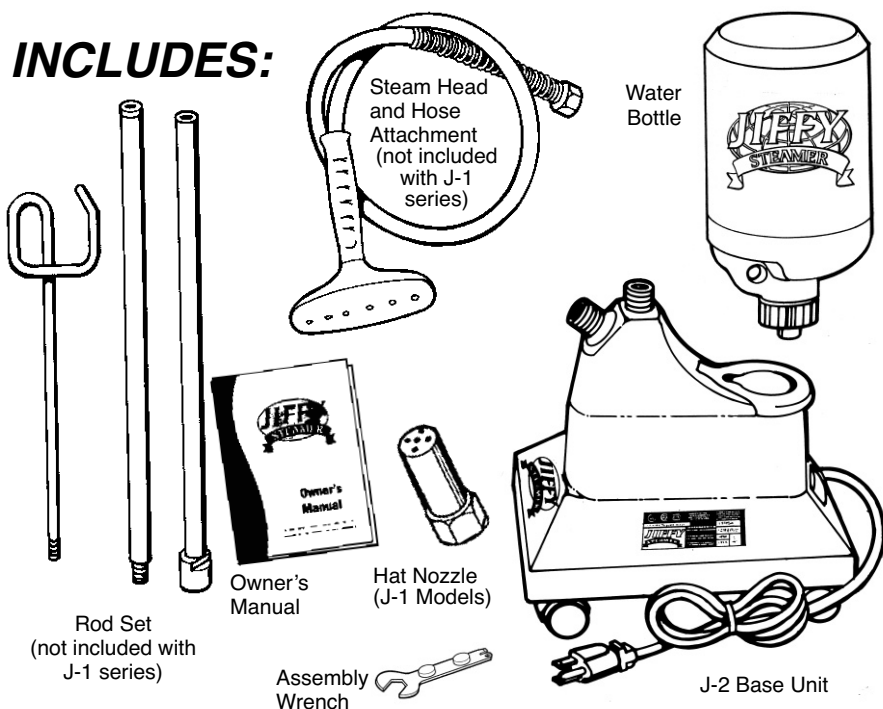


Jiffy® J-1 and J-2 Model Steamer

FEATURES

- Cast aluminum housing for durability (Models J-1 and J-2)
- Lightweight, flexible hose - Models J-2 (J-1 series utilizes a brass hat nozzle)
- Shatterproof water bottle
- Safety wiring feature temporarily turns the unit off if it accidentally runs dry
- Comfortable, easy-to-grip handle
- Removes wrinkles up to five times faster than conventional ironing
- Easy-roll casters for mobility (casters not included with J-1 series)
- Numerous steam head attachments available
- 120 volt or 230 volt units available
- Backed by Jiffy®'s renowned customer service--*should your steamer need repair, send it to us and we will repair and ship the unit within 24 hours from its arrival to our plant*

INCLUDES:



Jiffy® J-1 and J-2 Model Steamer Directions

1. For J-2 models, attach hose firmly with included assembly wrench, which is magnetized and located on the bottom of the unit (figure #1). Assemble and attach hose hanger rod set. For J-1 models, the brass hat nozzle should already be attached. There is no rod set or hose attachment for J-1 models. Every Jiffy® Steamer has been factory tested and it is not uncommon for small amounts of water to be in the unit.



Figure 1

2. Invert bottle of fresh tap or distilled water, plug into proper voltage outlet, turn switch to lighted ON position and you will have steam within minutes. Never use your foot to turn steamer on/off. Never substitute the Jiffy® Steamer water bottle.



Figure 2

3. For easy operation, mount optional Jiffy® Steamboard to door or wall to hold clothing while steaming (figure #2). For hanging garments without optional Jiffy® Steamboard, simply install an eye screw or nail to inside of a doorway or directly onto a wall or you may use steamer's rod set as shown in figure 3. Touch material lightly with steaming head and wrinkles will vanish instantly. The combined touch of the steaming head and the direct steam is very important. Some articles can be steamed better from the underneath side. Speed and efficiency is accomplished with a little practice. Always steam with hose in an upright position, so any condensation is free to flow back into steamer. If steaming in a low position near floor, extend hose up and out frequently to keep clear of condensation. **DO NOT ALLOW STEAMER TO RUN DRY.**



Figure 3

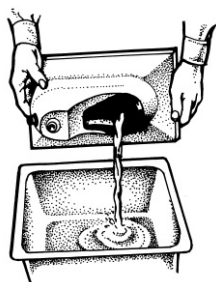


Figure 4

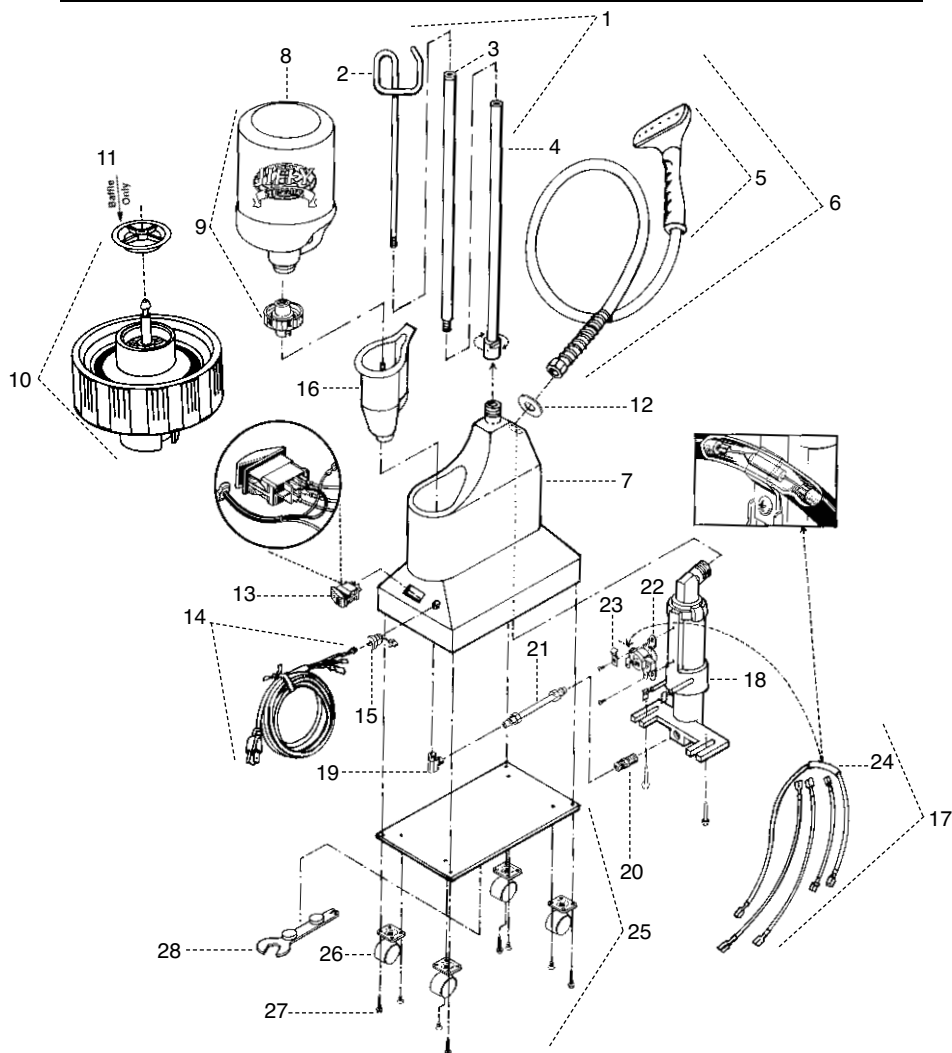
4. Hang steam head in an upright position in the hose hanger section when not in use and turn switch to OFF (figure #3).
5. Periodically, pour old water out of steamer to avoid sediment buildup and maintain proper water level (figure #4). Remove hard water deposits with Jiffy® Liquid Cleaner. See page 28 for complete cleaning instructions.

NOTE: No two water supplies have the same mineral content. If your steamer begins to cut on and off during normal use, the thermostat is indicating the heating unit needs the sediment cleaned out.

WARNING: Never operate without water. Unplug after each use.

From the library of: Superior Sewing Machine & Supply LLC

Jiffy® J-1 and J-2 Parts Diagram



Should you ever need replacement parts for your Jiffy® Steamer, you may purchase them separately. Use this handy diagram and parts list to identify any part you may need. Please include model and serial number when ordering.

Jiffy Steamer

Key#	Part #	Part Description	List Price
1	1030	Rod Set and Nut Complete with Metal Studs	\$ 25.50
	0031	Hose Hanger Rod Set with Adapter Complete	\$ 25.50
	0031A	Hose Hanger Rod Set without Adapter Complete	\$ 21.50
	0041	Base Adapter with Thumb Screw (for Old Style Rods Sets)	\$ 4.00
2	0035	Hook Section of Rod Set	\$ 6.50

Jiffy® J-1 and J-2 Parts Diagram Key

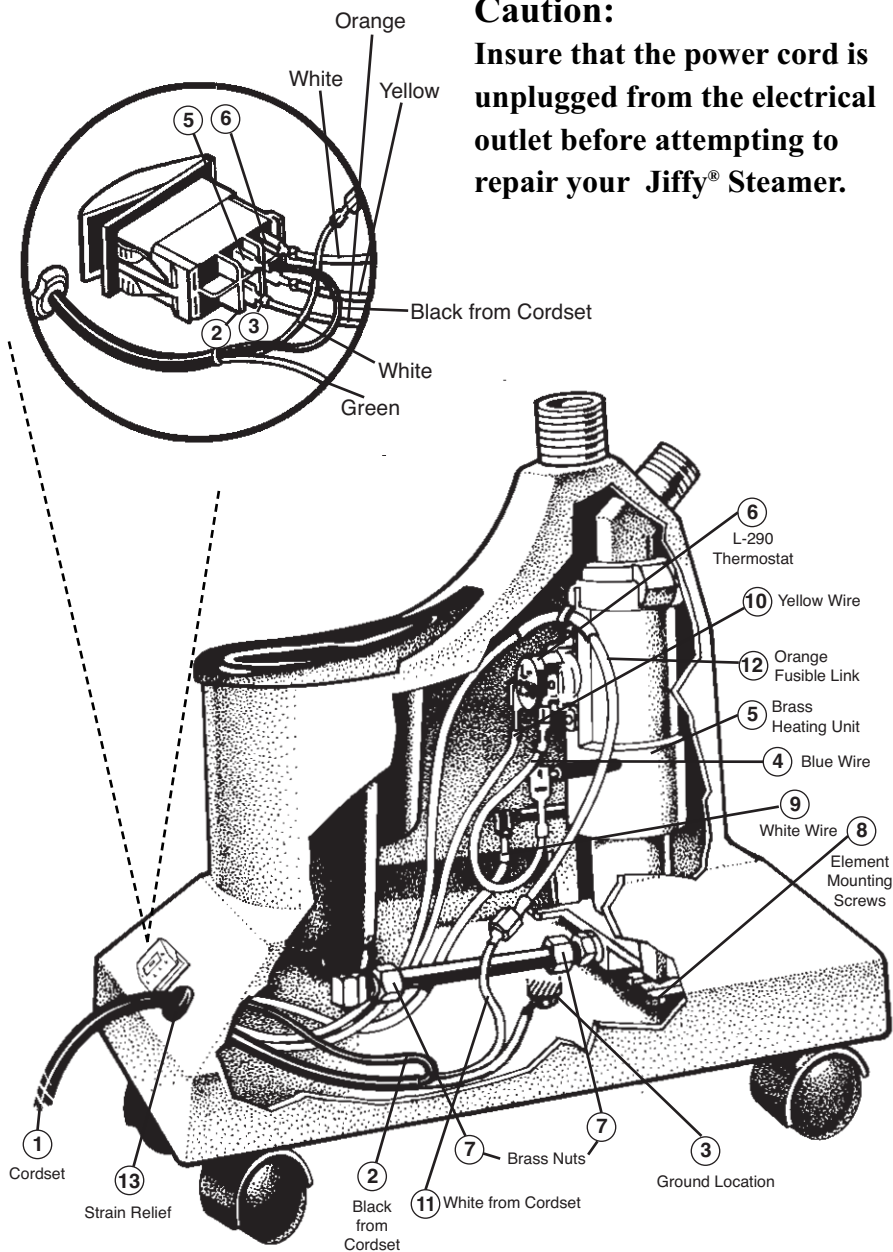
Key#	Jiffy Steamer Part #	Part Description	List Price
3	0036	Middle Section of Rod Set	\$ 7.50
4	1033	Bottom Section of Rod Set (with Nut Attached)	\$ 13.50
	0037	Bottom Section of Rod Set (without Nut)	\$ 7.50
	0043	Metal Threaded Cap Screw for Rod Set	\$ 1.50
	0039	Metal Threaded Stud for Rod Sections	\$ 1.50
5	0253	Plastic Steam Head/Handle Replacement Kit	\$ 22.00
6	0251	Plastic Head/Handle Hose Attachment Complete	\$ 50.00
	0280	Hose Per Foot (Black in Color)	\$ 3.00
7	0002	Painted Die Cast Aluminum Housing	\$ 51.50
	0023	Plastic Water Bottle "A" with Cap	\$ 6.50
	0027	Replacement Cap for Water Bottle "A"	\$ 0.75
8	0026A	Plastic Water Bottle "B" without Check Valve Cap	\$ 5.75
9	0025	Plastic Water Bottle "B" with Check Valve Cap	\$ 9.50
10	0027A	Replacement Check Valve Cap for Water Bottle "B"	\$ 3.75
11	0027B	Replacement Check Valve Cap Baffle Only	\$ 0.25
12	0004	Round Beauty Ring	\$ 0.75
	0122	Toggle Switch (3 Pieces)	\$ 7.50
	0127	Red Neon Pilot Light with Lock Ring 120 Volt	\$ 4.00
	0128	Red Neon Pilot Light with Lock Ring 230 Volt	\$ 4.00
13	1125	Green Lighted Contura Rocker Switch 120 Volt	\$ 9.00
	1126	Green Lighted Contura Rocker Switch 230 Volt	\$ 9.00
14	0132	Cord Set (16/3 gauge) with Strain Relief	\$ 9.50
15	0146B	Cord Strain Relief	\$ 1.50
16	0028	Water Cup with 90 Degree Brass Fitting	\$ 18.00
	0147	Internal Wire Set for Models with Front Red Light	\$ 9.00
17	0148	Internal Wire Set for Models with Green Contura Rocker Switch	\$ 9.00
	0596	Heating Unit Kit (wiring included) for Models with Front Red Light - 120 Volt Cord Set and 4" Water Line	\$ 81.50
	0177A	Heating Unit Kit (wiring included) for Models with Front Red Light - 230 Volt Cord Set and 4" Water Line	\$ 81.50
	0597	Heating Unit Kit (wiring included) for Models with Green Lighted Rocker Switch - 120 Volt Cord Set and 4" Water Line	\$ 81.50
	0597A	Heating Unit Kit (wiring included) for Models with Green Lighted Rocker Switch - 230 Volt Cord Set and 4" Water Line	\$ 81.50
18	0161A	Heating Unit Assembly (no wiring included) - 120 Volt and 4" Water Line	\$ 62.50
	0162A	Heating Unit Assembly (no wiring included) - 230 Volt and 4" Water Line	\$ 62.50
19	0030	Brass 90 Degree Elbow Joint	\$ 2.50
20	1130	3/8" x 1/4" Straight Brass Fitting for Heating Element Housing	\$ 2.50
21	0591	Copper Tube (4" length) with Nuts and Compression Rings	\$ 4.00
	1191	Copper Tube (4 1/2" length) with Nuts and Compression Rings	\$ 4.00
	0187	Copper Tube (5" length) with Nuts and Compression Rings	\$ 4.00
22	0160	L-290 Thermostat	\$ 8.00
23	0195	Fusible Link Clamp	\$ 1.50
24	0151	Fusible Link Wire with Insulated Lug and Clamp	\$ 3.00
25	0009	Bottom Plate with Casters	\$ 13.50
26	0011	Bottom Plate Casters (Set of 4)	\$ 6.50
27	0010	Screws for Bottom Plate (4 Screws Total)	\$ 0.75
ACCESSORIES			
28	1026	"I" Kit - 5.5' Hose with Four Attachments	
	1050	Jiffy Steamer Assembly Wrench	\$ 4.00
	0274	Brass Hat Nozzle Attachment	\$ 13.00
	0254	Metal Head/Wood Handle Hose Attachment Complete	\$ 70.00
	0256	Metal Head / Wood Handle Only	\$ 37.50
	0269	Replacement Wooden Handle (for Metal Steam Heads)	\$ 7.00
	0262	Wig Hose Attachment	\$ 58.00
	1062	Steam Cleaning "B" Brush Hose Attachment	\$ 60.00
	1063	Brush Only for the B" Hose Attachment	\$ 8.00
	0899	Liquid Cleaner - 3 Ten (10) Ounce Bottles per Package*	\$ 15.00
		*Not Available for Export.	

J-1/J-2/J-200

Jiffy® J-1 and J-2 Wiring Diagram

Caution:

Insure that the power cord is unplugged from the electrical outlet before attempting to repair your Jiffy® Steamer.



Jiffy® J-1 and J-2 Wiring Instructions

Before attempting any repair on a Jiffy Steamer product, make sure that it is unplugged from the outlet. If you have any questions, please contact our repair department at 1-800-525-4339 between 7:30 AM - 4:00 PM Central Standard Time.

Please note switch terminal 2, 3, 5 and 6 indicated on the enlarged switch diagram are marked on the actual switch. Jiffy® Steamers manufactured before May 2000 are not marked with the terminal switch numbers. Numbers in parenthesis refer to the drawing on on the right.

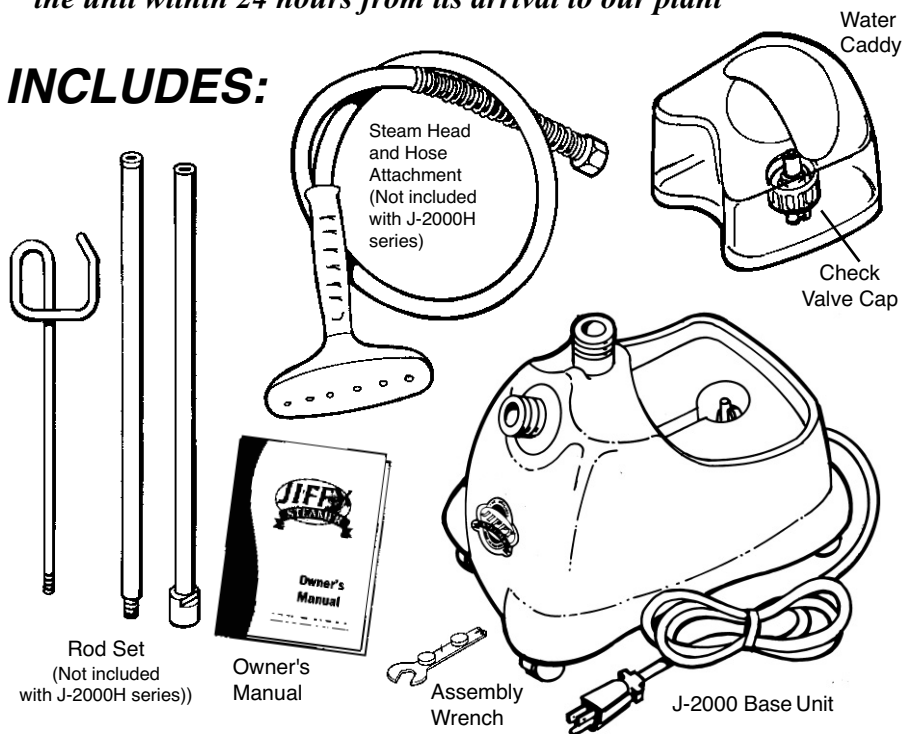
1. Insert cord set (1) into housing and connect black positive wire (2) from cord set to terminal number 5 on the switch.
2. Secure with grounding screw ground wire from cord set to the ground location on the housing (3).
3. Connect blue wire (4) from the right side of brass heating element (5) to right side of the L-290 thermostat (6).
4. Insert brass heating element unit into housing. Hand tighten the brass nuts (7) on the water line to the element and to the 90 degree fitting from the cup. Tighten 2 mounting screws (8) at the base of heating element. Now, use a 5/8" wrench to securely tighten the brass nuts on the water line to the element and to the 90 degree fitting from the water cup. Heating unit may be loosened and adjusted for a better fit if necessary.
5. Connect white wire (9) from the left side of the heater unit to terminal number 6 on switch.
6. Connect yellow wire (10) from the left side of the thermostat to terminal number 3 on the switch.
7. Connect white neutral wire (11) from cord set bundle to orange fusible link with plastic connector (12).
8. Connect other end of orange fusible link to terminal number 2 on the switch.
9. Set steamer upright and place black plastic strain relief (13) approximately 4 1/2" from end of cord set and insert into housing using pliers.
10. Secure bottom plate with four screws.
11. To avoid leakage, be sure to tighten hose (or hat nozzle) with wrench before using steamer.

Jiffy® J-2000 Model Steamer

FEATURES

- Polymer outer housing unit for durability
- Lightweight, flexible hose
- Shatterproof water caddy
- Safety wiring feature temporarily turns the unit off should it accidentally run dry
- Comfortable, easy-to-grip handle
- Removes wrinkles up to five times faster than conventional ironing
- Easy-roll casters for mobility
- Numerous steam head attachments available
- 120 volt or 230 volt units available
- Backed by Jiffy®'s renowned Customer Service--*should your steamer need repair, send it to us and we will repair and ship the unit within 24 hours from its arrival to our plant*

INCLUDES:



Jiffy® J-2000 Directions

1. Attach hose firmly with included assembly wrench, which is magnetized and located on the bottom of the unit. Assemble and attach hose hanger rod set. Every Jiffy® Steamer has been factory tested and it is not uncommon for small amounts of water to be in the unit.
2. Invert water caddy filled with distilled or tap water, plug into proper voltage outlet, turn switch to lighted ON position and you will have steam within minutes. Never substitute the Jiffy® Steamer water caddy.
3. For easy operation, mount optional Jiffy® Steamboard to door or wall to hold clothing while steaming (figure #2). For hanging garments without optional Jiffy® Steamboard, simply install an eye screw or nail to inside of a doorway or directly onto a wall or you may use your steamer's rod set as shown in figure 3. Touch material lightly with steaming head and wrinkles will vanish instantly. The combined touch of the steaming head and the direct steam is very important. Some articles can be steamed better from the underneath side. Speed and efficiency is accomplished with a little practice. Always steam with hose in an upright position, so any condensation is free to flow back into steamer. If steaming in a low position near floor, straighten hose up and out frequently to keep clear of condensation. **DO NOT ALLOW STEAMER TO RUN DRY.**



Figure 1



Figure 2

4. Hang steam head in an upright position in the hose hanger section when not in use and turn switch to OFF (figure #3).
5. Periodically, pour old water out of steamer to avoid sediment buildup and maintain proper water level (figure #4). Remove hard water deposits with Jiffy® Liquid

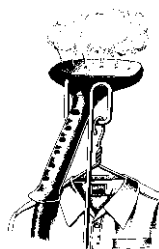


Figure 3

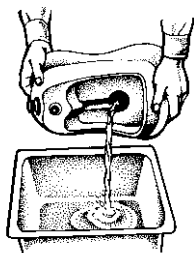


Figure 4

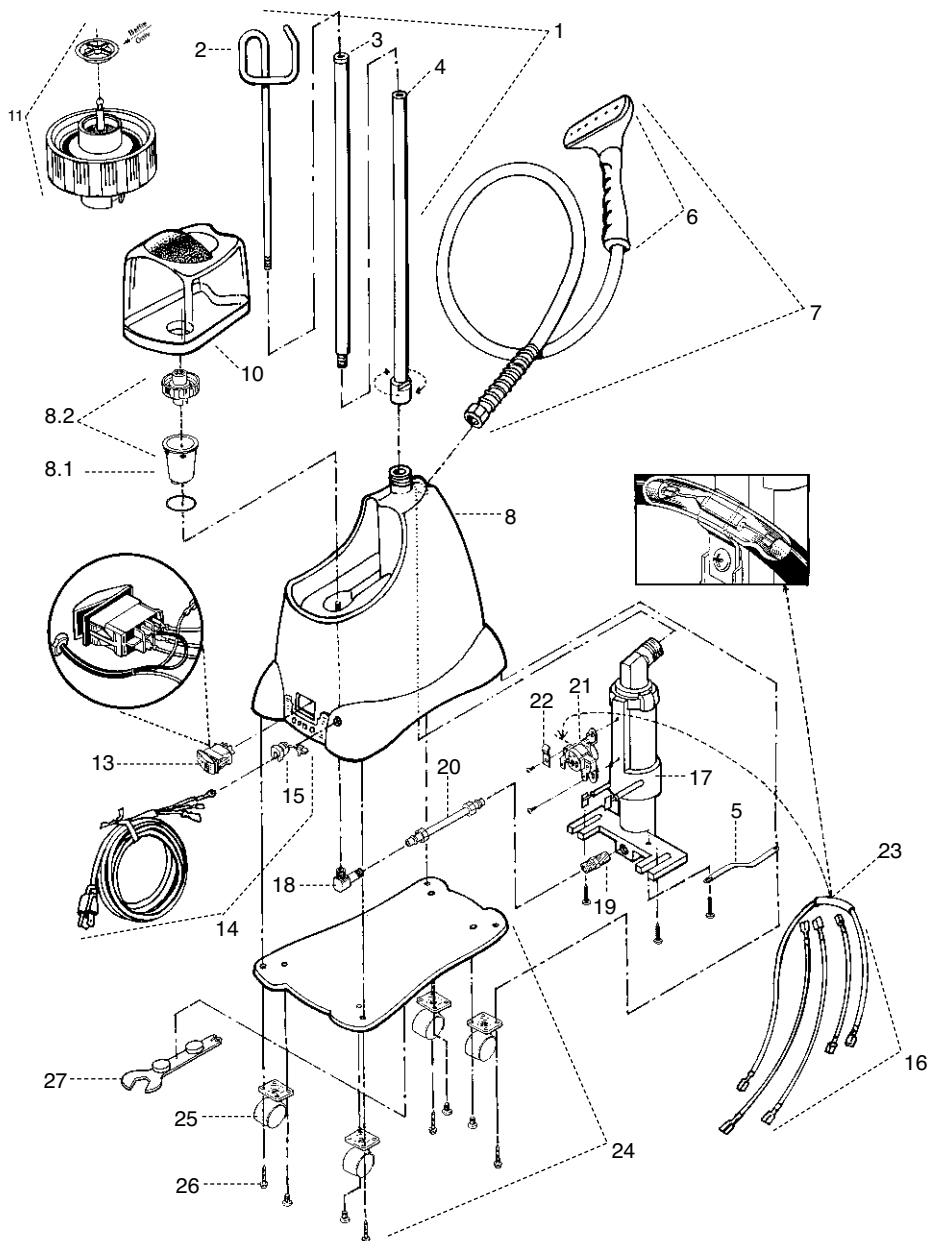
Cleaner. Wipe water cup out with a hand towel. See page 28 for complete cleaning instructions.

NOTE: No two water supplies have the same mineral content. If your steamer begins to cut on and off during normal use, the thermostat is indicating the heating unit needs the sediment cleaned out.

WARNING: Never operate without water. Unplug after each use.

J-2000

Jiffy® J-2000 Parts Diagram



Should you ever need replacement parts for your Jiffy® Steamer, you may purchase them separately. Use this handy diagram and parts list to identify any part you may need. Please include model and serial number when ordering.

Jiffy® J-2000 Parts Diagram Key

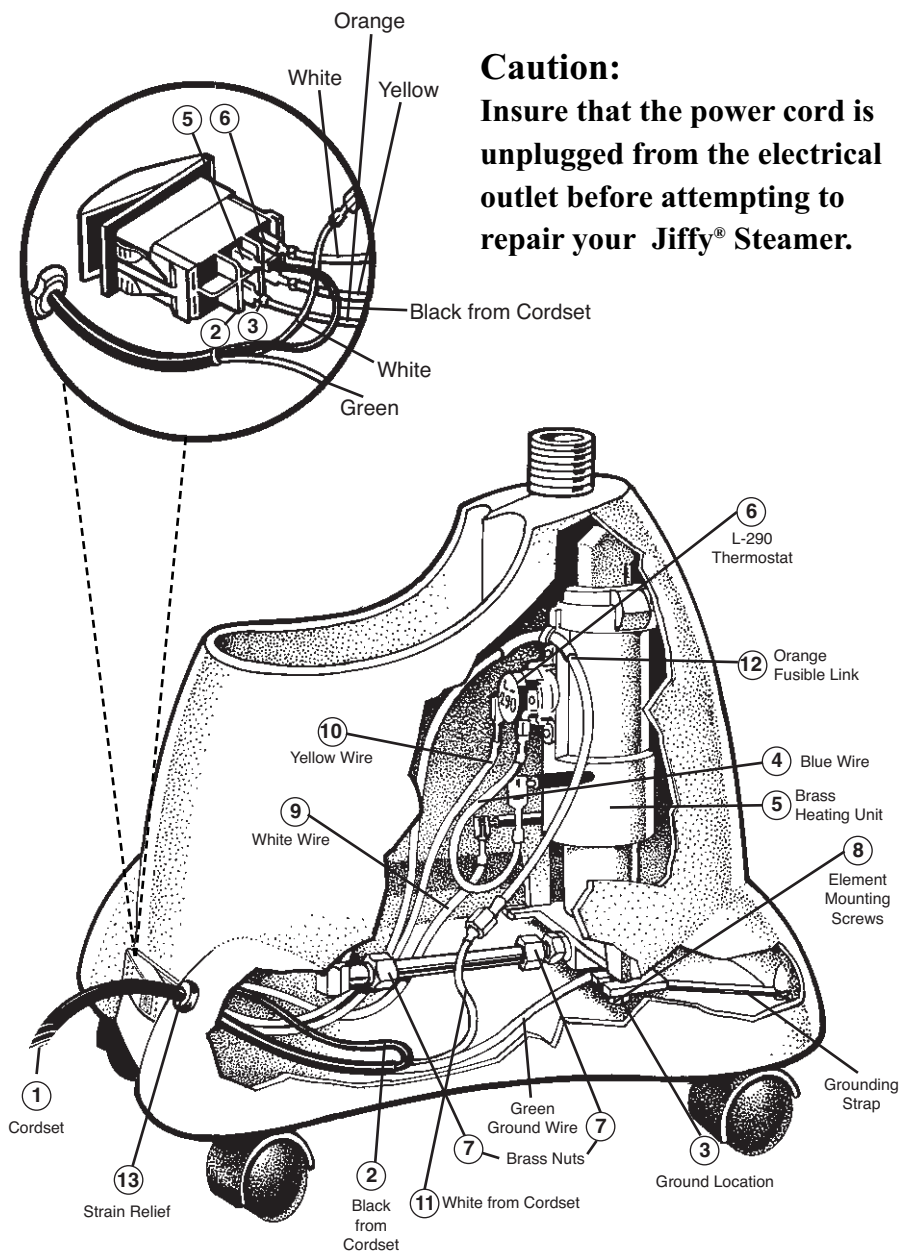
Key#	Jiffy Steamer Part #	Part Description	List Price
1	1030	Rod Set and Nut Complete with Metal Studs	\$ 25.50
2	0035	Hook Section of Rod Set	\$ 6.50
3	0036	Middle Section of Rod Set	\$ 7.50
4	0037	Bottom Section of Rod Set	\$ 7.50
	0043	Metal Threaded Cap Screw for Rod Set	\$ 1.50
	0039	Metal Threaded Stud for Rod Sections	\$ 1.50
5	1102	Grounding Strap for Heating Element	\$ 1.50
6	0253	Plastic Steam Head/Handle Replacement Kit	\$ 22.00
7	0251	Plastic Head/Handle Hose Attachment Complete	\$ 50.00
	0280	Hose Per Foot (Black in Color)	\$ 3.00
8	1107	J-2000 Beige Housing Kit with Water Cup	\$ 58.00
	1108	J-2000 Beige Housing Kit without Water Cup	\$ 43.00
	1107P	J-2000 Pink Housing Kit with Water Cup	\$ 58.00
	1108P	J-2000 Pink Housing Kit without Water Cup	\$ 43.00
	1107S	J-2000 Silver Housing Kit with Water Cup	\$ 58.00
	1108S	J-2000 Silver Housing Kit without Water Cup	\$ 43.00
8.1	1110	O-Ring for J-2000 Water Cup	\$ 3.00
8.2	1111	J-2000 Water Cup with 90 degree Bass Fitting and o-ring	\$ 18.00
9	1140	J-2000 Water Caddy Complete with Check Valve Cap	\$ 28.00
10	1141	J-2000 Water Caddy Complete without Check Valve Cap	\$ 24.25
11	0027A	Replacement Check Valve Cap	\$ 3.75
	0004	Round Beauty Ring	\$ 0.75
12	0027B	Replacement Check Valve Cap Baffle Only	\$ 0.25
13	1125	Green Lighted Contura Rocker Switch - 120 Volt	\$ 9.00
	1126	Green Lighted Contura Rocker Switch - 230 Volt	\$ 9.00
14	0132	Cord Set (16/3 gauge) with Strain Relief	\$ 9.50
15	0146B	Cord Strain Relief	\$ 1.50
16	0148	Internal Wire Set	\$ 9.00
	0597	Heating Unit Kit (wiring included) for Models with Green Lighted Contura Rocker Switch - 120 Volt Cord Set and 4" Water Line	\$ 81.50
	0597A	Heating Unit Kit (wiring included) for Models with Green Lighted Contura Rocker Switch - 230 Volt Cord Set and 4" Water Line	\$ 81.50
17	0161A	Heating Unit Assembly (no wiring included) for Models with Green Lighted Rocker Switch - 120 Volt Cord Set and 4" Water Line	\$ 62.50
	0162A	Heating Unit Assembly (no wiring included) for Models with Green Lighted Contura Rocker Switch - 230 Volt Cord Set and 4" Water Line	\$ 62.50
18	1131	Brass 90 Degree Elbow Joint - Extended Version	\$ 2.50
19	1130	3/8" x 1/4" Straight Brass Fitting for Heating Element Housing	\$ 2.50
20	0591	Copper Tube(4" length) with Nuts and Compression Rings	\$ 4.00
21	0160	L-290 Thermostat	\$ 8.00
22	0195	Fusible Link Clamp	\$ 1.50
23	0151	Fusible Link Wire with Insulated Lug and Clamp	\$ 3.00
24	1120	Bottom Plate with Casters	\$ 18.00
25	0011	Bottom Plate Casters (Set of 4)	\$ 6.50
26	1114	Screws for Bottom Plate (4 Screws Total)	\$ 0.75
ACCESSORIES			
	1026	"I" Kit - 5.5' Hose with Four Attachments	\$ 90.00
27	1050	Jiffy Steamer Assembly Wrench	\$ 4.00
	0254	Metal Head/Wood Handle Hose Attachment Complete	\$ 70.00
	0256	Metal Head / Wood Handle Only	\$ 37.50
	0262	Wig Hose Attachment	\$ 58.00
	1062	Steam Cleaning "B" Brush Hose Attachment	\$ 60.00
	1063	Brush Only for the "B" Hose Attachment	\$ 8.00
	0898	Liquid Cleaner - 3 Ten (10) Ounce Bottles per Package*	\$ 15.00
		*Not Available for Export.	

J-2000

Jiffy® J-2000 Wiring Diagram

Caution:

Insure that the power cord is unplugged from the electrical outlet before attempting to repair your Jiffy® Steamer.



Jiffy® J-2000 Wiring Instructions

Before attempting any repair on a Jiffy Steamer product, make sure that it is unplugged from the outlet. If you have any questions, please contact our repair department at 1-800-525-4339 between 7:30 AM - 4:00 PM Central Standard Time.

Please note switch terminal 2, 3, 5 and 6 indicated on the enlarged switch diagram are marked on the actual switch. Jiffy® Steamers manufactured before May 2000 are not marked with the terminal switch numbers. Numbers in parenthesis refer to the drawing on on the right.

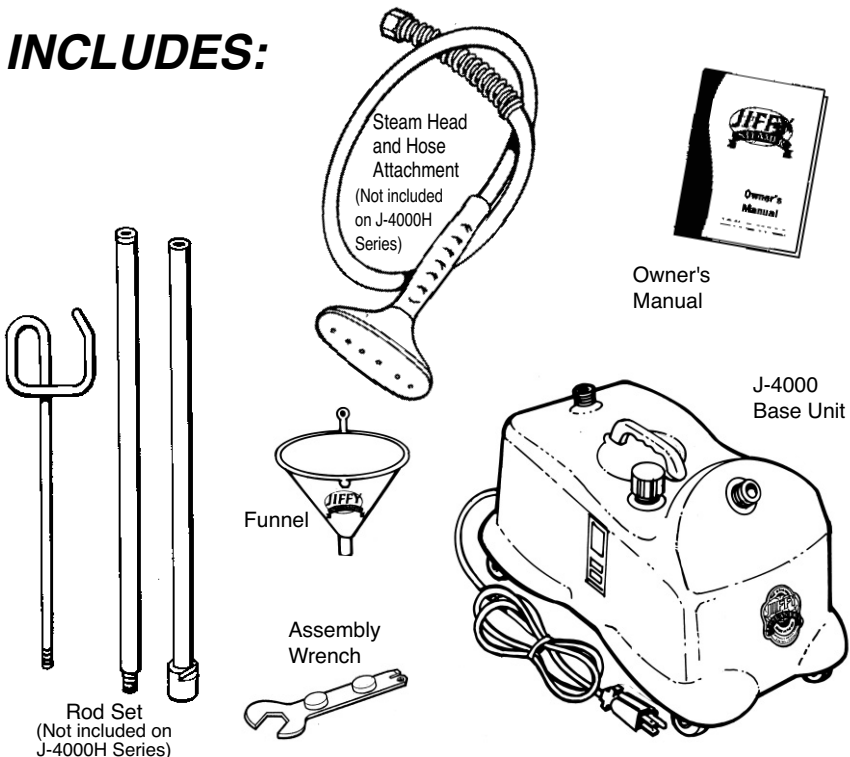
1. Insert cord set (1) into housing and connect black positive wire (2) from cord set to terminal number 5 on the switch.
2. Connect blue wire (4) from the right side of brass heating element (5) to right side of the L-290 thermostat (6).
3. Insert brass heating element unit into housing. Hand tighten the brass nuts (7) on the water line to the element and to the 90 degree fitting from the cup. Tighten 2 mounting screws (8) at the base of heating element. Now, use a 5/8" wrench to securely tighten the brass nuts on the water line to the element and to the 90 degree fitting from the cup. Heating unit may be loosened and adjusted for a better fit if necessary.
4. Place the copper 4 inch grounding strap as shown in drawing. Secure grounding strap and the green ground wire with the grounding screw by attaching to the heating element ground location (3).
5. Connect white wire (9) from the left side of the heater unit to terminal number 6 on switch.
6. Connect yellow wire (10) from the left side of the thermostat to terminal number 3 on the switch.
7. Connect white neutral wire (11) from cord set bundle to orange fusible link with plastic connector (12).
8. Connect other end of orange fusible link to terminal number 2 on the switch.
9. Set steamer upright and place black plastic strain relief (13) approximately 4 1/2" from end of cord set and insert into housing using pliers.
10. Secure bottom plate with four screws.
11. To avoid leakage, be sure to tighten hose (or hat nozzle) with wrench before using steamer.

Jiffy® J-4000 Model Steamer

FEATURES

- Built-in, easy-to-read sight gauge which indicates water level and sediment build-up.
- Cast aluminum housing unit for durability
- Corrosion-proof stainless steel boiler tank--no water lines to become clogged with hard water deposits
- Dual thermostats for preheat and steam settings.
- Safety wiring feature temporarily turns the unit off should it accidentally run dry
- Numerous steam head attachments available
- Backed by Jiffy®'s renowned customer service--*should your steamer need repair, send it to us and we will repair and ship the unit within 24 hours from its arrival to our plant*

INCLUDES:



Jiffy® J-4000 Directions

1. Attach hose firmly with included assembly wrench, which is magnetized and located on the bottom of the unit (figure #1). Assemble and attach hose hanger rod set (figure #2). For “H” series models, there will be no hose attachment or rod set to attach.



Figure 1

2. Using supplied funnel, add a maximum of four quarts of warm (fresh tap or distilled) water (cold water takes longer to preheat). Do not overfill. Plug into proper voltage outlet, turn switch to “PREHEAT”. Steamer will hold at this temperature, and the light will go off and on occasionally. **NOTE:** The J-4000 Steamer contains a large water reservoir for 2 hours of continuous steaming. Leave the switch in the “PREHEAT” position (figure #3) if you plan to use your steamer throughout the day. This will maintain water temperature in the reservoir.



Figure 2

3. Immediately after water is preheated, (red pilot light turns off) turn switch to “STEAM” position for steam in approximately 2 minutes. The combined touch of the steaming head and the direct steam is very important. Some articles can be steamed better from the underneath side. Always steam with hose in upright position so any condensation is free to flow back into steamer. If steaming in a low position near floor, straighten hose up and out



Figure 3

frequently to keep it clear of condensation. If steamer runs dry it will temporarily shut off. Once finished using the unit, turn the switch to the “OFF” position. If more water needs to be added to the steamer, allow steamer to cool before removing fill cap and adding more water. Never pour cold water on a hot element. Resume steaming by resetting the switch to the

“STEAM” position.

4. Hang steam head and hose in upright position in the hose hanger section (figure #4), turn switch to the “OFF” position (figure #3) and unplug the cord set when not in use.
5. Periodically, pour old water out of steamer to avoid sediment build up and maintain proper water level. Never have more than 4 quarts of water in steamer. If overfilled, water will boil up into hose. The Jiffy® Liquid Cleaner is recommended every 6 months to flush mineral deposits. See page 29 for complete cleaning instructions.

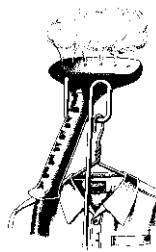


Figure 4

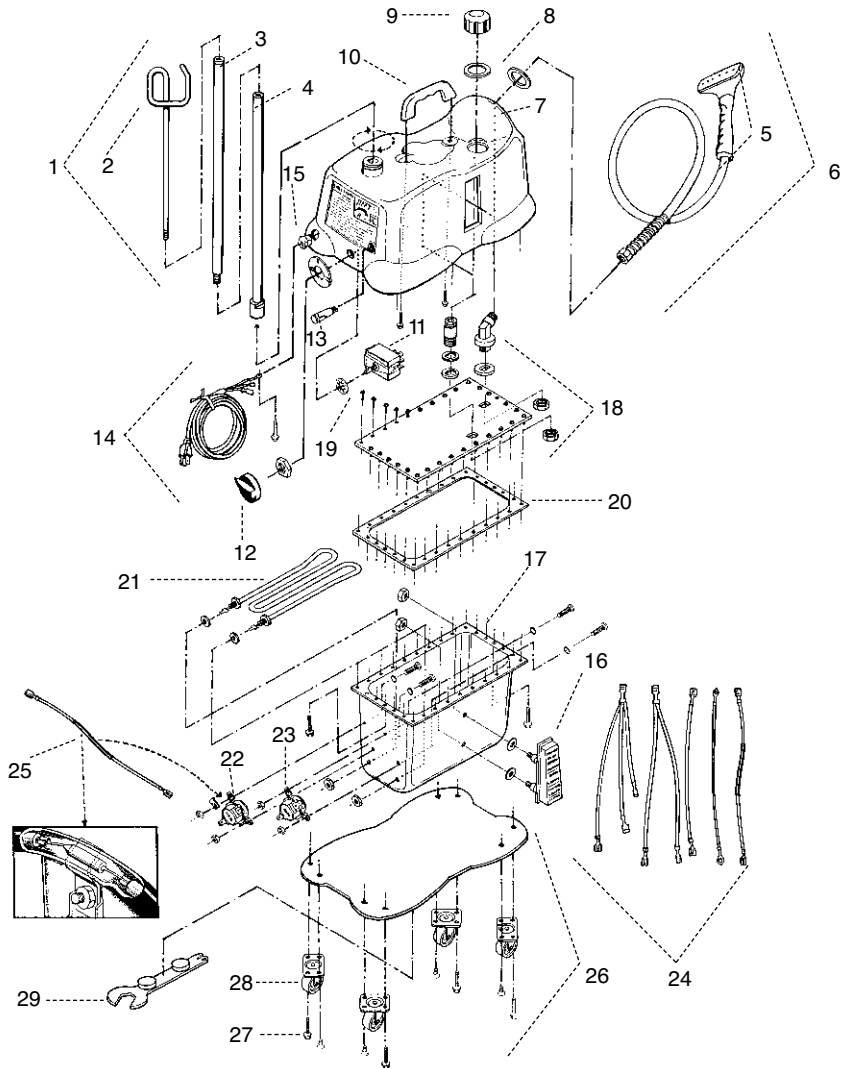
Every Jiffy® Steamer has been factory tested and it is not uncommon for small amounts of water to be in the unit.

WARNING: Never operate without water. Unplug after each use.

From the library of: Superior Sewing Machine & Supply L23

Jiffy® J-4000 Parts Diagram

*** For models manufactured after March 2005.**



Should you ever need replacement parts for your Jiffy® Steamer, you may purchase them separately. Use this handy diagram and parts list to identify any part you may need. Please include model and serial number when ordering.

Jiffy Steamer			List
Key#	Part #	Part Description	Price
1	1030	Rod Set and Nut Complete with Metal Studs	\$ 25.50
	1034	Rod Set and Nut Complete for Drapery Steamers	\$ 29.00
2	0035	Hook Section of Rod Set	\$ 6.50

Jiffy® J-4000 Parts Diagram Key

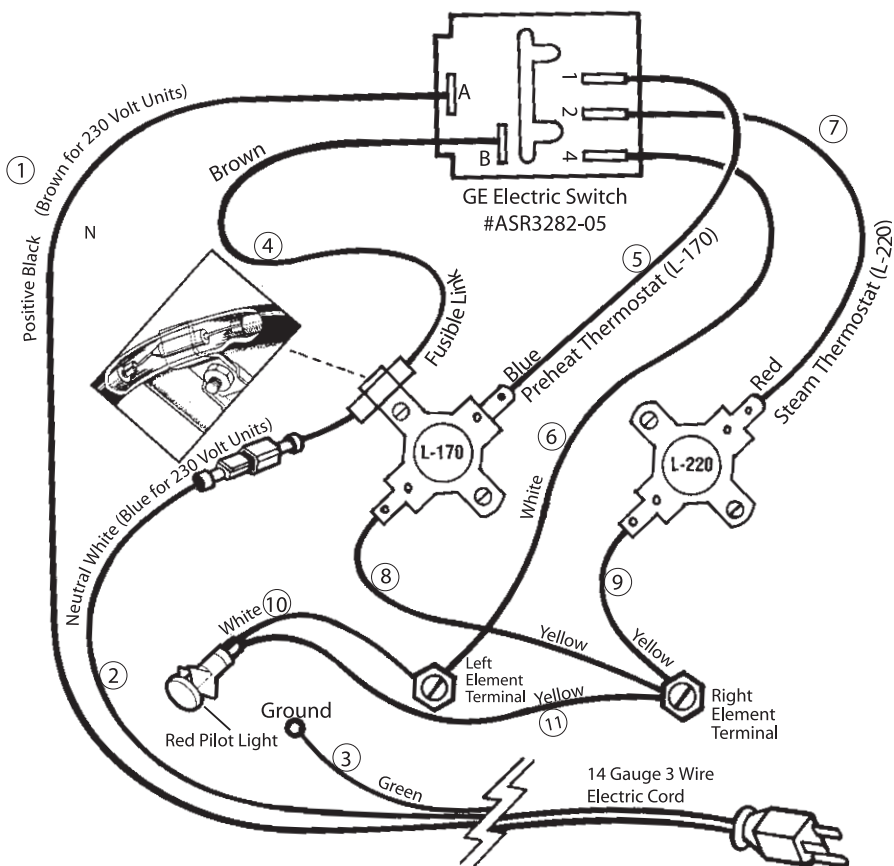
Jiffy Steamer			List Price
Key#	Part #	Part Description	
3	0036	Middle Section of Rod Set (with Barrel Stud and Cap Screw)	\$ 7.50
4	1033	Bottom Section of Rod Set (with Nut Attached)	\$ 13.50
	0037	Bottom Section of Rod Set (without nut)	\$ 7.50
	0038	Additional Middle Section of Rod Set for Drapery Steamers	\$ 7.50
	0043	Metal Threaded Cap Screw for Rod Set	\$ 1.50
	0039	Metal Threaded Stud for Rod Sections	\$ 1.50
5	0253	Plastic Steam Head/Handle Replacement Kit	\$ 22.00
6	0251	Plastic Head/Handle Hose Attachment Complete	\$ 50.00
	0280	Hose Per Foot (Black in Color)	\$ 3.00
7	1301	J-4000 Die Cast Aluminum Housing	\$ 72.00
	0006	Hex Beauty Ring	\$ 0.75
8	0004	Round Beauty Ring	\$ 0.75
9	0049	Water Fill Cap	\$ 6.50
	0053	Funnel	\$ 3.50
10	0054	Housing Handle with Two Screws	\$ 7.00
11	0199	Rotary Power Switch and Knob	\$ 12.00
12	0201	Replacement Knob Only for Rotary Power Switch	\$ 1.50
13	1310	Red Neon Pilot Light (120 VOLT)	\$ 4.50
	1311	Red Neon Pilot Light (230 VOLT)	\$ 4.50
14	0133	Cord Set (14/3 gauge) with Strain Relief	\$ 9.50
15	0146C	Cord Strain Relief	\$ 1.50
16	0050	Water Level Sight Gauge with Nuts and Washers	\$ 32.00
	1353	Stainless Steel Boiler Tank Kit Complete (120 Volt/1500 Watts)	\$ 155.00
	1354	Stainless Steel Boiler Tank Kit Complete (230 Volt/1500 Watts)	\$ 155.00
	0074A	Stainless Steel Boiler Tank with Sight Gauge (J-4)	\$ 78.00
17	0074C	Stainless Steel Boiler Tank Only	\$ 46.00
18	1370	Stainless Steel Boiler Tank Lid with 2 Brass Fittings and 2 Beauty Rings	\$ 28.00
19	0071	Boiler Tank Screw Set (Set of 30)	\$ 6.00
	0061	Boiler Tank Silicone Sealer (2.8 Fluid Ounces)	\$ 4.50
	0062	Boiler Tank Silicone Sealer (10.1 Fluid Ounces)	\$ 8.00
20	0075	Boiler Tank Gasket	\$ 8.50
21	0063	"W" Bend Heating Element (120 Volt, 1500 Watt) with Hardware	\$ 28.00
	0064	"W" Bend Heating Element (230 Volt, 1500 Watt) with Hardware	\$ 28.00
22	0203	Preheat Thermostat (L-170)	\$ 8.00
23	0204	Steam Thermostat (L-220)	\$ 8.00
24	0155	Internal Wire Set (Set of 5 Wires) for "W" Bend Element	\$ 8.00
25	0158	Fusible Link Wire with Insulated Cap and Clamp	\$ 3.00
26	1320	Bottom Plate with Four Casters	\$ 18.00
27	0017	Bottom Plate Screws (Set of 4)	\$ 0.75
28	0018	Bottom Plate Casters (Set of 4)	\$ 6.50
ACCESSORIES			
	1026	"I" Kit - 5.5' Hose with Four Interchangeable Steam Head Attachments	\$ 90.00
	1027	"I" Kit - 7.5' Hose with Four Interchangeable Steam Head Attachments	\$ 96.00
29	1050	Jiffy Steamer Assembly Wrench	\$ 4.00
	0259	Auto Hose Attachment with Dual Metal Heads	\$ 82.00
	0257	Carpet Hose Attachment with 12" wide Metal Head	\$ 75.00
	0252	7.5' Drapery Hose Attachment with Plastic Steam Head	\$ 56.00
	0255	7.5' Drapery Hose Attachment with Metal Steam Head	\$ 76.00
	0254	Metal Head / Wood Handle Hose Attachment Complete	\$ 70.00
	0256	Metal Head / Wood Handle Only	\$ 37.50
	0269	Replacement Wooden Handle (for Metal Steam Heads)	\$ 7.00
	0262	Wig Hose Attachment	\$ 58.00
	0274	Brass Hat Nozzle Attachment	\$ 13.00
	1062	Steam Cleaning "B" Brush Hose Attachment	\$ 60.00
	1063	Brush Only for the "B" Hose Attachment	\$ 8.00
	0898	Liquid Cleaner - 3 Ten (10) Ounce Bottles per Package*	\$ 15.00

*Not Available for Export.

Jiffy® J-4000 Wiring Diagram

Caution:

Insure that the power cord is unplugged from the electrical outlet before attempting to repair your Jiffy® Steamer.



Jiffy® J-4000 Wiring Instructions

Please note, the switch terminal numbers and the switch terminal letters are marked on the actual switch.

1. Positive black (1) (brown for 230 volt units) to A on switch.
2. Neutral white to (2) brown fuse wire (4) (blue for 230 volt units).
3. Green ground wire (3) to grounding mount on housing.
4. Brown fuse (4) wire to B on switch.
5. Blue wire (5) from top of preheat thermostat (L170) to #1 on switch.
6. White wire (6) from left side of element to #4 on switch.
7. Red wire (7) from top of steam thermostat (L-220) to #2 on switch.
8. Long yellow wire (8) from bottom of preheat thermostat to right side of element.
9. Short yellow wire (9) from right side of element to bottom of steam (L-220) thermostat.
10. White wire (10) from light to left side of element.
11. Medium length yellow wire (11) from light to right side of element.

Questions?

When calling our technical support line

@ 1-800-525-4339

or e-mail us at

jsinfo@jiffysteamer.com

***Please have your
model and serial number available.***

J-4000

Jiffy® J-1, J-2 and J-2000 Cleaning Instructions

The cleaning procedure below is recommended as a regular maintenance measure to help your steamer maintain its maximum steaming performance. This maintenance should be performed on a basis of every 3-6 months depending on your water supply. In most cases, a steamer that is severely clogged will require disassembly to properly clean and prolong the life span of the unit. An authorized repair center or a Jiffy® Steamer service technician best performs this disassembly.

1. Unplug your steamer from the wall outlet. Remove hose attachment at the brass coupling using a wrench and remove water bottle from unit. Pour out any remaining water from your unit.
2. If the hose attachment is blocked by sediment build-up, flush your hose attachment by using a garden water hose. This should loosen and remove any build-up that may have occurred within the hose itself.
3. To clean the internal parts of your steamer, use of the Jiffy® Liquid Cleaner (10 ounce bottle) is recommended. This acid-based cleaner will remove hard water deposits and sediment build-up. This cleaner is not available for export.
4. Pour the cleaning solution into the water cup of your steamer. This is the location on the steamer base where you normally place the water bottle or caddy. Allow the cleaning solution to remain in the unit for 3 hours. **DO NOT STEAM THE SOLUTION IN THE UNIT AS DAMAGE MAY OCCUR.**
5. Pour the cleaning solution out of the steamer. Do this by tilting the steamer back and forth and pouring the solution out of the water cup area.
6. Rinse the unit thoroughly by flushing with fresh water 3 times.
7. If discolored water or residue continues to come from the unit, the above procedure may need to be repeated.
8. Please call 1-800-525-4339 or 731-885-6690 for further instructions or questions.



Jiffy® J-4000 Cleaning Instructions

The cleaning procedure below is recommended as a regular maintenance measure to help your steamer maintain its maximum steaming performance. This maintenance should be performed on a basis of every 3-6 months depending on your water supply. In most cases, a steamer that is severely clogged will require disassembly to properly clean and prolong the life span of the unit. An authorized repair center or a Jiffy® Steamer service technician best performs this disassembly.

1. Remove hose attachment from unit at the brass coupling using a wrench. Pour out any remaining water from your unit.
2. If the hose attachment is blocked by sediment build-up, use a water hose to clean inside the hose. This should loosen and remove any build-up that may have occurred within the hose itself.
3. To clean the internal parts of your steamer, use of the Jiffy® Liquid Cleaner (10 ounce bottle) is recommended. This acid-based cleaner will remove hard water deposits and sediment build-up. This cleaner is not available for export.
4. Fill your steamer with 1 gallon of water and add the entire ten (10) ounce bottle of Jiffy® Steamer Liquid Cleaner. Turn the steamer to PREHEAT and allow water and solution to warm.
5. When the red pilot light goes off, indicating the end of the PREHEAT cycle, turn the switch to OFF and unplug the steamer from the wall outlet. Allow the water and cleaning solution to remain in the steamer for 3 hours. **DO NOT STEAM THE SOLUTION IN THE UNIT AS DAMAGE MAY OCCUR.**
6. Pour the cleaning solution out of the steamer. Do this by tipping the steamer over and pouring the solution out of the brass fitting where your hose attachment normally connects.
7. Rinse the unit thoroughly by flushing with fresh water 3 times.
8. If discolored water or residue continues to come from the unit, the above procedure may need to be repeated.
9. Please call 1-800-525-4339 or 731-885-6690 for further instructions or questions.

Jiffy® Steamer Maintenance

Clean and rinse your steamer regularly:

All steamers need to be cleaned and rinsed on occasion to remove mineral deposits. We recommend our Jiffy® Steamer Liquid Cleaner for cleaning internal parts.

Never use additives:

Additives such as salt, vinegar, bleach, perfumes and dyes should never be added to your steamer water. These substances will corrode or clog internal parts.

Never allow your steamer to run dry:

Running a steamer dry will cause internal damage to the heating element and wiring.

Never pour cold water into a hot steamer:

If by mistake your steamer has run dry of water, allow the unit to cool before adding water. Cold water poured on top of a hot heating element may cause damage to the element.

Steam in a vertical, upright position:

Do not use your steamer in a horizontal position like an iron. Steam in a vertical up and down motion. This will allow the condensation in the hose to flow back into the steamer.

Secure your hose nut tightly:

If your steamer has a hose attachment, use the onboard assembly wrench to insure the brass nut is fastened tightly to the base of the steamer. Wrench is magnetized to the bottom plate.

Never use an extension cord:

Extension cords should not be used on this product. Adding an extension cord may create damage to the steamer's power cord and internal wiring.

Do not pull steamer by the power cord:

Pulling the steamer by the power cord may cause the internal wiring to become loose.

Never use your foot to turn steamer ON/OFF:

Damage may occur to the power switch should you turn the unit off using excess pressure with your foot.

Storing the steamer:

Before storing the steamer for an extended period (30 days or more), empty all water from the unit. Water becomes stale with time and may clog internal parts.

Other Jiffy® Steamer Accessories

Esteam® Converter & Adapter Plugs

Take your Esteam® worldwide and use it at 100% power. Our converter contains a 25 amp triac semiconductor for stable power output, large aluminum heat-sink to dissipate heat and a UL listed, flame retarding, non-conductive material used in the outer housing. Available for 120 volt units only.



The Jiffy® Steamboard

The Jiffy® Steamboard provides a convenient work space for quickly setting pleats and creases. Ideal for clothing retailers, tailors and home use. Attachments enclosed with the board allow you to mount the unit to your baseboard (optional for an additional charge), hang it over a door or mount it directly to the wall. Not for export.



Jiffy® Liquid Cleaner

Our unique liquid cleaner removes hard water deposits from your Jiffy® Steamer. Easy to use, and it works on all Jiffy® models. Use only Jiffy® Cleaner as other cleaners may damage internal parts. Not available for export.

PATENTS

Jiffy® Steamer products and their components mentioned within this manual are covered by some or all of the following U.S. patents: D421,165 / D423,156 / D426,924. The design and configuration of the Model J-2 is a registered U.S. Trademark. Other patents are pending.

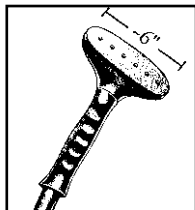
Jiffy® Steamer Head Configurations

Optional Steam Head Configurations

Configuration #1

Standard Plastic Steam Head

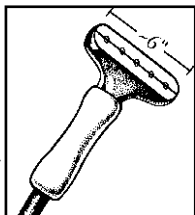
Available on the J-2®, J-2000®, J-4000® and J-4000D® Model steamers.



Configuration #2

Metal Steam Head with Wooden Handle

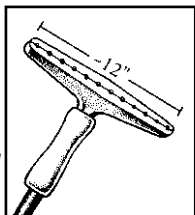
Available on the J-2M®, J-2000M®, J-4000A®, J-4000DM® and J-4000M® Model steamers.



Configuration #3

Carpet Installation and Wallpaper Removal Steam Head

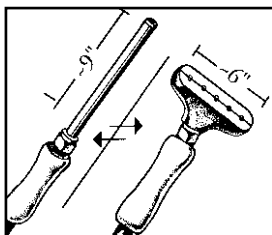
Available on the J-4000C® Model steamer.



Configuration #4

Auto/Upholstery Pipe Steam Head & the Interchangeable Metal Steam Head

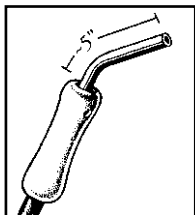
Available on the J-4000A® Model steamer.



Configuration #5

Wig Steam Head

Available on the J-2W®, J-2000W® and J-4000W® Model steamers.

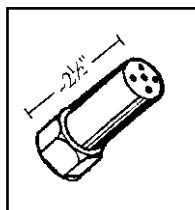


Jiffy® Steamer Head and Plug Configurations

Configuration #6

Hat Steam Nozzle

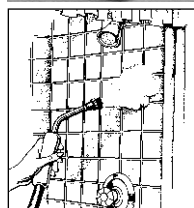
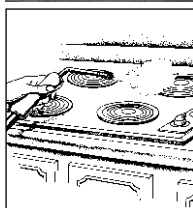
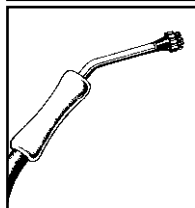
Available on the J-1®, J-2000H®, and J-4000H® Model steamers.



Configuration #7

Steam Cleaning Brush Head

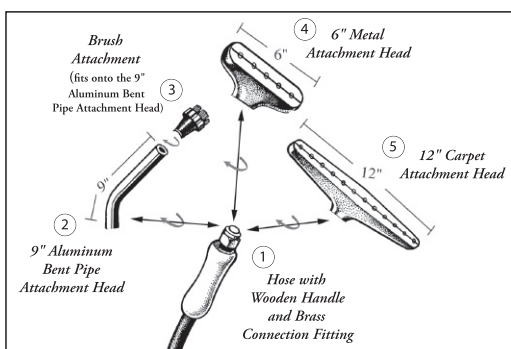
Available on the J-2B®, J-2000B®, and J-4000B® Model steamers.



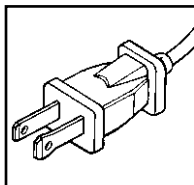
Configuration #8

Jiffy® Steamer "I" Kit with Four Interchangeable Steam Head Attachments

5.5' - "I" Hose Available on all J-Series Units.
7.5' - "I" Hose Only Available on J-4000 Series.

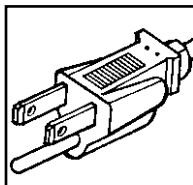


Jiffy® Steamer World Power Supply Configurations



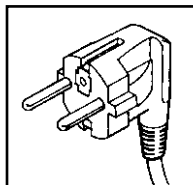
**NEMA 1-15 120V
PLUG #1**

Not available on the J-4000® Series.

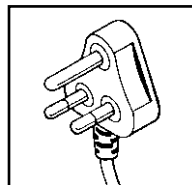


**NEMA 5-15 120V
or 230V
PLUG #2**

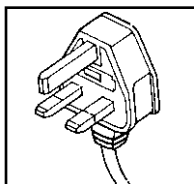
Not available on the ESTEAM® Series.



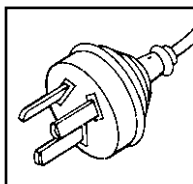
**CEE-7 230V
PLUG #3**



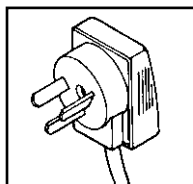
**BS 546 230V
PLUG #4**



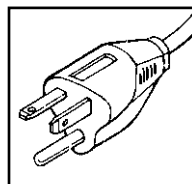
**BS 1363 230V
PLUG #5**



**ETSA S/86 230V
PLUG #6**



**SI 32 230V
PLUG #7**



**620-P 230V
PLUG #8**

Jiffy® Steamer Troubleshooting

Esteam®

PROBLEM	POSSIBLE CAUSE	SOLUTION
Steamer works poorly or cycles ON and OFF while steaming.	The unit has sediment build-up and needs a thorough cleaning. Possible thermostat trouble.	Use Jiffy® Liquid Cleaner to clean off element. A small brush may be needed to help scrub unit. Replace thermostat on unit.
The red indicator light illuminates but the unit never heats or steams.	The fuse wire, heating element or thermostat may be bad.	Replace fusible link wire, heating element or thermostat in unit. This may be done by you, an authorized repair center, or by a Jiffy® Steamer Company technician.
The unit spits water from steam cap.	The unit is being over-filled. The unit needs to be cleaned out inside tank and cap. User is tilting unit too far forward or backward during usage.	For best results from your steamer, use Jiffy Liquid Cleaner periodically to remove sediment deposits from your water (every 3 to 4 months) depending on how much the unit is used. Do not over-fill unit above max water mark indicated on side of unit.

J-1 / J-2 / J-2000 Models

PROBLEM	POSSIBLE CAUSE	SOLUTION
Steamer works poorly or cycles ON and OFF while steaming.	The unit has sediment build-up and needs a thorough cleaning. Possible thermostat trouble.	Jiffy® Liquid Cleaner may solve the problem, but manual cleaning is the best solution at this point. The heating element must be disassembled and cleaned out manually.
The green indicator light does not illuminate when turned to ON position.	The fuse wire is bad. The cordset is bad. Wires may be disconnected. The switch is bad. The unit is not plugged in. The outlet may be defective or inoperable.	Check the unit's current flow and replace defective part. Try to plug the unit into another outlet.
On units purchased in 1986 and before, the red indicator light illuminates but the unit never heats or steams.	The heating element may be bad.	Replace the heating element. This may be done by you, an authorized repair center, or by a Jiffy® Steamer Company technician.
The steamer spits water from the steam head.	The steam head may be cracked or damaged. The unit has been overfilled (4 quarts maximum). The rod set is not fully assembled (three sections for most models and four sections for drapery steamers).	Replace head once signs of excess wear are apparent. Make sure the hose is straight and that it has no kinks which may trap condensation in the hose.
Unit does not produce steam when green indicator light is on.	Check water level to make sure unit is not out of water. Heating element may be bad. Wire may be disconnected.	Turn unit off, allow cool down period and refill water container. Check unit with a voltage meter (if qualified).

Jiffy® Steamer Troubleshooting

J-4000 Model

PROBLEM	POSSIBLE CAUSE	SOLUTION
The red indicator light remains ON for over 20 minutes, but no steam is produced from the unit at the STEAM setting.	The heating element may be bad. Thermostat may be bad. Check water level.	Replace the heating element and reseal the tank assembly with high temperature silicone. Replace thermostat.
The red indicator light does not illuminate when the switch is turned to the PREHEAT or STEAM setting.	The fuse wire is bad. The cordset is bad. Wires may be disconnected. The switch is bad. The unit is not plugged in.	Check the unit's current flow and replace defective part.
The red indicator light works on the PREHEAT or STEAM setting, but not on both.	Wires may be disconnected. The switch is bad. The L170 or L220 thermostat is bad.	Wiring needs to be checked by an authorized repair center, or by a Jiffy® Steamer Company technician. Replace switch. Replace thermostat.
The steamer spits water from the steam head.	The steam head has a crack or blemish. Hard water sediment has built up in the head. The unit has been overfilled (4 quarts maximum). The rod set is not fully assembled (three sections for most models and four sections for drapery steamers).	Replace head once signs of excess wear are apparent. Never fill the steamer with more than 4 quarts. Make sure the hose is straight and that it has no kinks which may trap condensation in the hose.
The steamer leaks water at the base of the unit.	There may be a hole in the tank (most common with older model units using aluminum tanks). The brass coupling between the hose and unit may be loose. The silicone sealant or rubber gasket around the tank assembly is leaking.	The faulty tank must be replaced with a new stainless steel tank. This involves replacing the tank, lid, and housing. This task is best serviced by a Jiffy® Steamer Company technician. Tighten hose coupling with a wrench. Reseal the tank and lid with a high heat silicone.

PLEASE NOTE: Each of these items serve as a simple suggestion when repairing your Jiffy® Steamer. To insure professional service, please send your unit to the plant for authorized personnel to repair the steamer. A user may experience decreased performance at higher altitudes.

Questions?

Call our technical support line

@ 1-800-525-4339 or 1-731-885-6690

or e-mail us at

jsinfo@jiffysteamer.com

From the library of: Superior Sewing Machine & Supply L35

Jiffy® Steamer Matrix Chart



INDEX

A = upholstery
 B = steam brush
 C = carpet
 D = drapery
 DM = metal steam head for drapery
 H = hat
 I = interchangeable steam head
 M = metal steam head with wooden handle
 W = wig



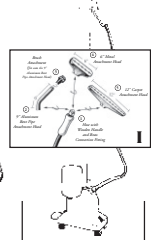
J-1



J-2



J-2B



J-2I

Matrix Chart

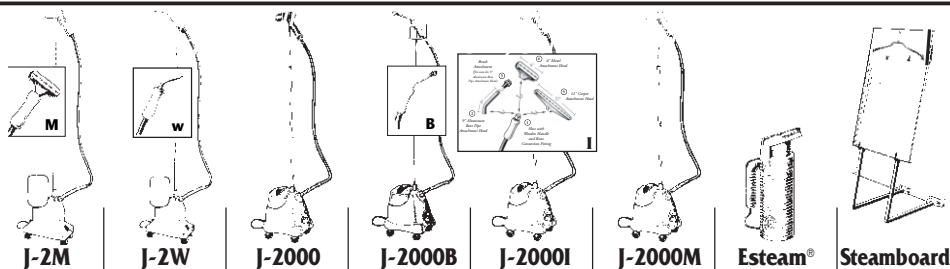
Commercial

Automotive				●
Furniture		●		●
Hat Manufacturers	●			
Industrial Supply		●		●
Floral Applications		●		●
Hospitality Industry		●		●
Retail				
• Clothing		●		●
• Mass Channel		●		●
Steam Cleaning			●	●
Photography		●		●
Movie Production		●		●
Interior Designers				
• Drapes				
• Carpets				
• Wallpaper				
Cosmetics				
• Beauty Salons				
• Hair Replacement				●
Rental Stores	●	●	●	●
Supply Houses	●	●	●	●

Consumer

Clothing		●		●
Steam Cleaning			●	●
Wallpaper				
Drapes		●		●
Furniture		●		●
Wigs				●
Travel				

Use this helpful matrix chart to help you find the right Jiffy® Steamer for your needs!



	J-2M	J-2W	J-2000	J-2000B	J-2000I	J-2000M	Esteam®	Steamboard
					●			
●			●		●	●		
●			●		●	●		●
●	●		●	●	●	●	●	
●			●		●	●	●	●
●			●		●	●		●
●			●		●	●		●
●			●	●	●	●	●	●
●			●		●	●	●	●
	●				●		●	
●	●	●	●	●	●	●	●	●
●	●	●	●	●	●	●	●	●
BEST		●			●	BEST	●	●
			●		●			
●		●			●	●		
		●			●	●		
	BEST				●			
						BEST		

Jiffy® Steamer Matrix Chart

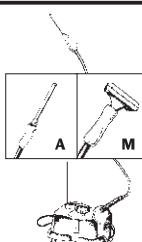


INDEX

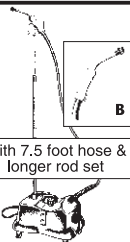
A = upholstery
B = steam brush
C = carpet
D = drapery
DM = metal steam head for drapery
H = hat
I = interchangeable steam head
M = metal steam head with wooden handle
W = wig



J-4000



J-4000A









J-4000B

With 7.5 foot hose & longer rod set

Matrix Chart

Commercial	Pro-Line	Pro-Line	Pro-Line
Automotive		BEST	
Furniture	●	BEST	
Hat Manufacturers			
Industrial Supply	●	BEST	
Floral Applications	●		
Hospitality Industry	●		
Retail			
• Clothing			
• Mass Channel			
Steam Cleaning			
Photography	●	●	
Movie Production	●	●	
Interior Designers			
• Drapes			
• Carpets			
• Wallpaper			
Cosmetics			
• Beauty Salons			
• Hair Replacement			
Rental Stores	BEST	BEST	BEST
Supply Houses	BEST	BEST	BEST
Consumer			
Clothing			
Steam Cleaning			BEST
Wallpaper			
Drapes			
Furniture		BEST	
Wigs			
Travel			

Use this helpful matrix chart to help you find the right Jiffy® Steamer for your needs!

 <p>J-4000C</p>	<p>Available with metal steam head (J-4000DM)</p> <p>With 7.5 foot hose & longer rod set</p>  <p>J-4000D</p>	 <p>J-4000H</p>	 <p>J-4000I</p>	 <p>J-4000M</p>	 <p>J-4000W</p>
Pro-Line	Pro-Line	Pro-Line	Pro-Line	Pro-Line	Pro-Line
			BEST		
			BEST		
		BEST			
BEST	BEST		BEST	BEST	
			BEST		BEST
BEST	BEST		BEST	BEST	
			●	BEST	
			●	BEST	
			BEST		
	●		BEST	BEST	
			BEST	BEST	
BEST	BEST		●		
BEST			●		
			●		
			●		
			●		BEST
BEST	BEST	BEST	BEST	BEST	BEST
BEST	BEST	BEST	BEST	BEST	BEST
			●		
			BEST		
BEST	BEST		●		
			●		
			●		
			●		BEST

Jiffy® Steamer PRODUCT SPECIFICATIONS



Worldwide Leader in
Steaming Equipment Since 1940

SPECIFICATIONS	ESTEAM®	J-1®	J-2®	J-200®	J-2000®	J-4000®
Voltage (120V)	✓	✓	✓	✓	✓	✓
Voltage (230V)	✓	✓	✓		✓	✓
Wattage	600W (120V) 625W (230V)	1300W	1300W	1300W	1300W	1500W
Amps (120V)	5	10.83	10.83	10.83	10.83	12.5
Amps (230V)	2.71	5.65	5.65	5.65	5.65	6.52
Fusible Link Safety Fuse	✓	✓	✓	✓	✓	✓
Power Cord Length	8 feet	7 feet	7 feet	7 feet	7 feet	7 feet
Multiple Cord Plug Configurations Available	✓	✓	✓	✓	✓	✓
High Temperature Silicone Braided Wiring	✓	✓	✓	✓	✓	✓
Electrical Certifications (Both 120V and 230V)	UL CSA, CE, TUV, NOM, ANCE	UL CSA, CE, TUV, NOM, ANCE	UL CSA, CE, TUV, NOM, ANCE	UL CSA, CE, TUV, NOM, ANCE	UL CSA, CE, TUV, NOM, ANCE	UL CSA, CE, TUV, NOM, ANCE
Uses Ordinary Tap Water	✓	✓	✓	✓	✓	✓
Water Capacity	8 ounces	1 gallon	1 gallon	1 gallon	.75 gallons	1 gallon
Water Level Easily Viewed	✓	✓	✓	✓	✓	✓
Pre-Heat Time with Maximum Water	2 minutes	2 minutes	2 minutes	2 minutes	2 minutes	15 minutes
Steam Duration	16 minutes	2 hours	2 hours	2 hours	1 hour 30 minutes	2 hours
Hose Length	—	—	5.5 feet	5.5 feet	5.5 feet	5.5 feet or 7.5 feet
Stainless Steel Boiler Tank	—	—	—	—	—	✓
Heating Element Type	Die Cast in Aluminum	Die Cast in Brass	Die Cast in Brass	Die Cast in Brass	Die Cast in Brass	Incoloy
Die Cast Aluminum Housing	—	✓	✓	—	—	✓
Hose/Clothing Hanger	—	—	✓	✓	✓	✓
1 Year Limited Warranty	✓	✓	✓	✓	✓	✓
Made in the U.S.A.	✓	✓	✓	✓	✓	✓
Net Weight Assembled	2 pounds	12 pounds	15 pounds	13 pounds	14 pounds	22 pounds
Gross Packaged Weight	3 pounds	14 pounds	17 pounds	16 pounds	17 pounds	26 pounds
Assembled Dimensions (L x W x H)	5.75 x 3.25 x 10.5 inches	13.5 x 7.5 x 13 inches	13.5 x 7.5 x 64.5 inches	13.5 x 7.5 x 64.5 inches	15 x 10 x 64 inches	18.5 x 10.5 x 62 inches
Single Carton Dimensions (L x W x H)	11.25 x 5 x 6.5 inches	15 x 9 x 19 inches	15 x 9 x 19 inches	15 x 9 x 19 inches	18 x 12 x 15 inches	20 x 12 x 14 inches
Attachments Available Attachments Legend: A = Auto B = Steam Brush C = Carpet D = Drapery DM = Metal Head Drapery H = Hat I = Interchangeable Steam Head M = Metal Head P = Plastic Head W = Wig	Voltage Converter (converts 230 voltage electrical current to 120 voltage)	B,H,M,P,W	B,H,I,M,P,W	B,H,I,M,P,W	B,H,I,M,P,W	A, B, C, D, H,I,M,P,W



Comments? Questions?

Jiffy® Steamer Company Hotline 1-800-525-4339

Jiffy® Steamer Warranty

1 Year Limited Product Warranty

The Jiffy® Steamer is precision built, tested and inspected before leaving our factory. It is guaranteed against defects in material or workmanship for one year from date of purchase. Cords are excluded. If any part proves to be defective, this product will be repaired free of charge. A nominal handling fee does apply. This warranty shall not apply to any unit which has been subject to misuse, neglect, negligence or accidents. Such damage will be repaired at a nominal charge. **JIFFY® STEAMER COMPANY, LLC** shall not be responsible for any incidental, special or consequential damages. All implied warranties, including, but not limited to warranties of fitness and merchantability, are limited in duration to one year from date of original purchase. This warranty gives you specific legal rights, and you may have other rights, which vary from state to state. Some states do not allow the exclusion limitations on how long an implied warranty lasts, so the above limitations and exclusions may not apply to you. If your Jiffy® Steamer requires service in the warranty period, ship it to the corporate headquarters address below, along with \$13.90 for return shipping and handling charges.

Return Policy

Jiffy® Steamer Company, LLC strives to manufacture the very best quality steamers available in the world today. In the event you find that our products do not meet your needs, you may return the unit in the original packaging materials, along with a copy of the purchase receipt to the following address:

Jiffy® Steamer Company, LLC • Attn: Returns Department
4462 Ken-Tenn Highway • Union City, Tennessee 38261 • USA
Phone: 1-731-885-6690 • Fax: 1-731-885-6692
Toll-Free: 1-800-525-4339 (In North America)

This return policy only applies to goods purchased directly from Jiffy® Steamer Company, LLC and is independent of other dealer return policies. Please note that we shall issue 100% merchandise credit if the unit is **returned in new condition** within 30 days of purchase. If the unit is **returned in new condition** outside this 30 day window, but before the end of 12 months since the purchase date, there shall be a 10% restocking fee assessed based on the invoice cost. Shipping charges are non-refundable under either of the above circumstances. Jiffy® Steamer Company, LLC reserves the right to refuse credit for discontinued products or steamers more than one (1) year past the date of purchase. If you have further questions regarding this, or any other issue, please do not hesitate to contact our customer service department at the above number. Thank you for your interest in Jiffy® Steamer products.

From the library of: Superior Sewing Machine & Supply LLC

Jiffy® Steamer Contact Information

Contact Us

Jiffy® Steamer Company, LLC looks forward to serving your needs. If you have questions regarding our products, please do not hesitate to contact us.

Jiffy® Steamer Corporate Headquarters Information:

Shipping Address:

4462 Ken-Tenn Highway
Union City, Tennessee 38261
United States of America

Mailing Address:

P.O. Box 869
Union City, Tennessee 38281
United States of America

Toll-Free: 1-800-525-4339 (In North America)

Voice: 1-731-885-6690

Fax: 1-731-885-6692

Email: jsinfo@jiffysteamer.com

Web: www.jiffysteamer.com

If Service is Required

**PLEASE DO NOT RETURN THIS APPLIANCE TO THE
STORE WHERE IT WAS PURCHASED.**

For information regarding product service, please call our Toll-Free number noted above. Our customer service hours are from 7:30 AM – 4:00 PM, Central Time Zone, Monday through Friday. Please have your model number, serial number, place of purchase, date of purchase and description of the problem available. All products serviced by our factory technicians carry a six (6) month warranty. Thank you and we look forward to serving your needs.

Thank You
for purchasing the original Jiffy® Steamer!

